

SUCCESS STORY

Shellharbour City Hub

DesignInc Sydney (in association with Lacoste + Stevenson) have been commissioned to design the new Shellharbour City Hub Stage 1 Civic and Cultural building for Shellharbour City Council. The new hub building will provide the community a cultural heart for the Shellharbour City Centre. The project has a total floor area of 14,000m² and includes a new state of the art Library, Museum, 350 seat Auditorium, Council Administrative Offices, Council Chambers and parking.



PROJECT DETAILS :

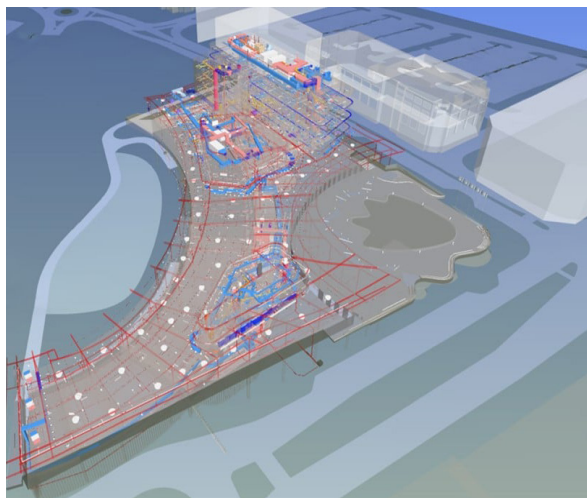
PROJECT TYPE: Cultural Center

START DATE: September 2013

COMPLETION: Mid 2017

LOCATION: Shellharbour, NSW, Australia

DesignInc



Having prior experience using dRofus on major Defence and Healthcare Infrastructure projects, DesignInc selected to implement dRofus for the Shellharbour City Hub project to achieve the following goals:

- Provide a centralised database for the Design Team to capture Brief and User requirements.
- Track the Program through Design phase milestones.
- Track the Program through Design phase milestones. Record vast quantities of FF&E and validate against Architectural and Services BIM Models.
- Capture Finishes and services requirements.

For several of the Design Team members, this was their first project using dRofus and they were surprised by how user-friendly dRofus was to operate. Through the use of the intuitive Dynamic GUI interface, both DesignInc Sydney and Lacoste + Stevenson, as well as Arup (providing Mechanical

"dRofus has been a game-changer for DesignInc Sydney. dRofus has been integrated as part of DesignInc Sydney's core processes to streamline briefing and delivery phases. Through the remote cloud access, dRofus facilitates true collaboration amongst the DesignTeam. We could not have delivered the Shellharbour City Hub Project without it."

– **Ellis Lamond**, Associate Director, DesignInc Sydney

and Electrical services) were able to customize the setup to meet project deliverables. Furthermore, the use of the dRofus RoomTemplates allowed the Design Team to expedite the traditional manual task of creating Room Data Sheets capturing core room data, finishes, building services and FF&E requirements that were synchronised to align with Building Information Models.

ABOUT DROFUS

The leading planning and data management solution for the global building industry. dRofus is a unique planning, data management and BIM collaboration tool that provides all stakeholders with comprehensive workflow support and access to building information throughout the building lifecycle. We are committed to Open BIM and as part of the Nemetschek Group, our aim is to deliver the best possible, most innovative and most successful AECO software solutions.

dRofus AS | Badstugata 2, 0183 Oslo, Norway

Phone: +33 769438592 | info@dروفus.com | www.dروفus.com | twitter: @dروفus

