

**SUCCESS STORY**

# Walsh: dRofus Makes P3 Easy and Connects All the Dots

Walsh is a full-service construction management organization that employs a proven, highly disciplined process to every project. **Walsh is the Design Builder for several Public Private Partnerships, also known as P3**, which involve a coordinated effort between the government and private industry to construct large scale projects like hospitals. Walsh leads the integrated project team of architects, engineers, contractors and oversees bidding, design, construction, procurement and final project sign off.

Jason Graham, Walsh’s Virtual Construction and Project Manager, vets all technology used by the organization’s Canadian Regional Office. He was searching for a solution that could span an entire P3 project – from bid to completion – to facilitate communication, enhance project efficiency and ensure data consistency. When he came across dRofus being used on the LaGuardia Airport project (also a Walsh project), he decided to pilot it on a P3 healthcare project in Canada to see if it could address Walsh’s needs. It was so successful that Jason hopes the government will require the use of dRofus since it “made the coordination and information exchange involved with a P3 project so easy.”

## Connecting the Dots

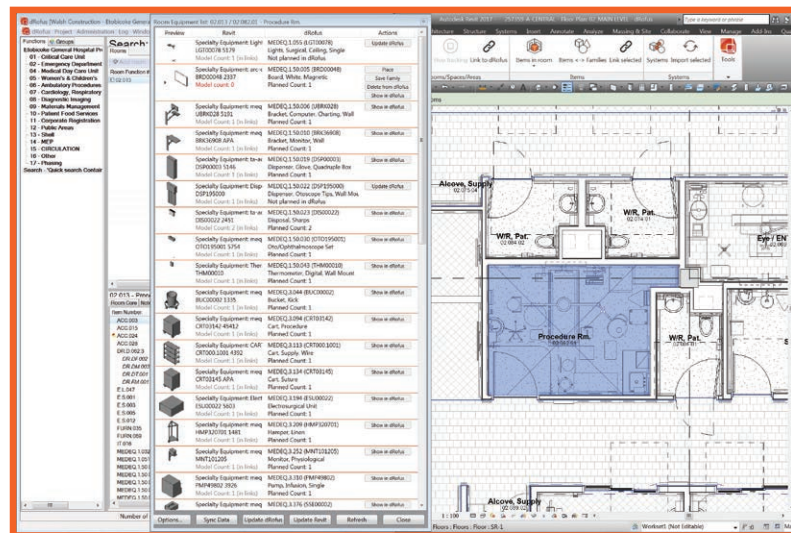
As the Design Builder, Walsh is responsible for “connecting the dots” and pulling everything & everyone together to create the final structure. To accomplish this feat, **Walsh used dRofus to establish a common data environment that spanned across all phases of the project – bidding, planning, building, tendering and closing out.** Jason says “dRofus is not just a coordination tool, it is integral to onsite project delivery and project management. It’s the go to source for all room information.”

“Anything that goes into a building needs to be modeled first. dRofus consolidated the data so everyone gets on the same page,” said Jason. Taking information initially provided by the government and the hospital’s compliance board, Walsh created Room Data Sheets in dRofus that detailed the materials, equipment, finishes and square footage in the rooms used throughout the facility. **dRofus held the “master” data which was directly synchronized with the models** and whenever changes were made, they got pushed from dRofus into the models.



“dRofus made the coordination and information exchange involved with a P3 project so easy.”

**Jason Graham**  
Virtual Construction and Project Manager  
Walsh Canada



“dRofus is not just a coordination tool, it is integral to onsite project delivery and project management. It’s the go to source for all room information.”

As a single source of information, **dRofus made it easy to prepare bids, create costing models and tender materials** by item, individual room, room groups, floor by floor, and department. Every physical item used in the project was included in dRofus, making it easy to tabulate everything down to the smallest details like how many coat hooks were needed for the entire building and tender materials. If the client decided to use tile instead of carpet for an area, Walsh could make the update and assess the budget impact immediately “with the click of a button.”

## 100% Confidence in Construction Documents

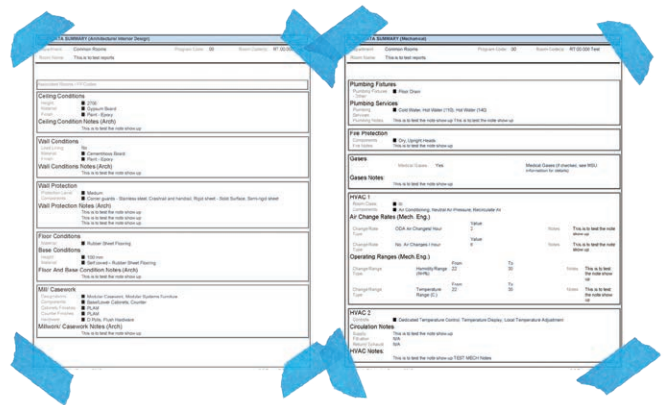
**dRofus enhanced efficiency and accuracy project-wide by “moving manual stuff out and gaining access to information immediately.”**

In the past, Room Data Sheets would be physically red-lined and manually reconciled to the Revit drawings with marked up copies being handed over to the hospital and government as part of the final construction document. It could take weeks to scan a building and make sure that all the information was correctly included and even then, it was prone to human error. Now, this process can be done in minutes with dRofus. **“We have 100% confidence in the construction document we deliver to the client,”** says Jason.

dRofus functioned as the “central nervous system” to keep the project on track and the team in synch. Jason and Walsh Design Managers used dRofus to monitor the architects and confirm that they made updates into the Room Data Sheet rather than the model. dRofus allowed non-technical team members without Revit knowledge to access information, check the room contents and create reports. Walsh’s Project Managers, who interacted with the trades and subcontractors, relied on dRofus to make sure that the data and model gelled up. **“One project had 7,000 FF&E items, dRofus pulled it all together so we could make sure that each item was in its proper place.”**

## Punchlist Nirvana

At project close out, **Walsh will transform dRofus data into a punchlist that the project team will use to track outstanding items from the Room Data Sheets.** Everyone will know what is supposed to be there – and what is missing. “dRofus is nirvana for identifying open items. Scanning rooms for missing items is simple and easy,” which provides Walsh with the assurances they need for final sign off.



Moving forward, Walsh is “optimizing our projects using dRofus so that we can further automate the QC and tendering process,” says Jason. “dRofus allows our projects to be more organized and helps tie up all loose ends.”



### About dRofus

The leading planning and data management solution for the global building industry. dRofus is a unique planning, data management and BIM collaboration tool that provides all stakeholders with comprehensive workflow support and access to building information throughout the building lifecycle. We are committed to Open BIM and as part of the Nemetschke Group, our aim is to deliver the best possible, most innovative and most successful AECO software solutions.

dRofus AS | Rådhusgt 17, 0158 Oslo, Norway  
Phone: +1.800.541.4890 | info@dروفوس.com | www.dروفوس.com | twitter: @dروفوس